

Zero Emission Electric Power Available

Collision avoidance system (CAS)

No Touch Protection: 3D Infrared sensor based system to ensure full IATA 913 Collision Avoidance Compliance



Low and zero emission extendable conveyor belt loader.

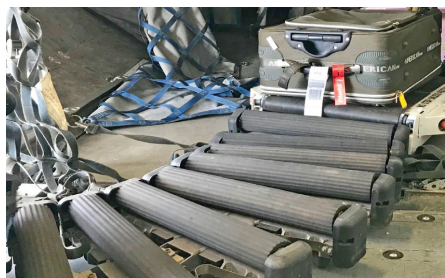
The TC-999 is the low and zero emission alternative for easily, safely and reliably loading aircraft with an extendable conveyor. The automatic leveling feature ensures that the unit remains level as the conveyor extends around corners into the cargo hold. Electronic controls at the delivery head insure safe and accurate belt operations from within the aircraft.

Independent motor controllers ensure reliable operation of the extending conveyor. In the unlikely event of conveyor difficulty, the entire conveyor can be manually retracted quickly without the need for additional tools or equipment ensuring on time departure.

Optional Directional Transfer Module (DTM) for cart/belt interface reduces lifting and transfer loads.

The TC-999 is available in electric, diesel, gasoline or LP power options.

Customized configurations for every application are available.



Proven durability. Trusted performance.

Features:

- ✓ Zero emission electric power
- ✓ Low emission Stage V and Tier 4 Final diesel power
- ✓ EPA approved gasoline or LP fuel
- ✓ Baggage/cargo placement control in all three dimensions
- ✓ Factory new automatic transmission
- ✓ Lightweight, fuel efficient, impact deflecting steel frame
- ✓ Belt and E-Stop controls at all four corners
- ✓ Emergency hand crank conveyor retraction
- ✓ LED lighting
- ✓ Safety
 - Back up alarm
 - Horn
 - Anti-restart ignition switch
 - Engine safety shutdown (low oil pressure, high temperature)

Photos and illustrations may show optional equipment.

Go to wollardintl.com for more. 

TC-999 Mobile Belt Loader

	IMPERIAL	METRIC		IMPERIAL	METRIC
Aircraft servicing capabilities			Belt conveyor		
Doorsill height	44 – 140 in	112 – 356 cm	Bed width	31.5 in	80 cm
Rear bed height (no DTM)	28 – 42 in	71 – 107 cm	Belt width	24 in	61 cm
Dimensions & shipping weight			Belt effective length	283.5 in	7.2 m
Overall length	345 in	876 cm	In-plane extendable roller conveyor		
Width	82 in	208 cm	Roller width	18 in	45.7 cm
Transport height	60 in	152 cm	Roller section length	240 in	6.1 cm
Shipping weight (non-electric)	8,500 lbs	3655 kg	Roller spacing	6 in	15.2 cm
Chassis			Capacity		
Frame	welded tubular steel		Belt (Disributed)	2,000 lbs	907.2 kg
Wheelbase	130 in	330 cm	Belt (Concentrated)	200 lbs/sq ft	90.7 kg
Drive speed (Diesel)	18.5 mph	30 mph	Rollers, each	400 lbs	181.4 kg
Drive speed (Electric, on level)	16 mph	26 kph	Roller speed	73 fpm	22.3 m/min
Ambient operating temperature range	-25° – +125° F	-32° – + 52° C			
Gradability	10%	10%			
Turn radius (center of tire)	22 ft	6.7 m			
Ground clearance	5.5 in	140 mm			

Drive System

Engine options

Electric

80V AC with Curtis controller
Lead- Acid or Lithium Battery
Onboard charger available

Diesel

Deutz D2.9L (available in Stage V and Tier 4 Final)
Cummins B3.3 (Tier 3, export only)
Deutz 2011 (Tier 3, export only)

Gasoline

Kubota WG2503
Ford MSG425

LP

Kubota WG2503
Ford MSG425

Cooling system

Full size liquid cooled radiator, isolated from vibration

Transmission

Factory new GM 4L70E automatic transmission with separate transmission fluid cooler, with shift abuse protection

Axles

Front: Brierton (standard), Comer (optional)

Rear: Comer

Tires

Front: 8.75R 16.5LT

Rear: 8.75R 16.5LT

Systems

Chassis

Lightweight, durable tubular impact deflecting frame

Steering

Power assisted

Braking

Four wheel split cylinder

Front: Disc

Rear: Internal wet disc

Parking: Drum with conveyor belt interlock

Systems (cont.)

Belt Controls

At delivery head: Forward, reverse, and stop on both left and right side

At bottom of conveyor: Forward, reverse and stop on both left and right side

At operators compartment: Forward, reverse and stop on both left and right side
Pulsing alarm for 3 seconds before belt/roller start

Conveyor back up systems

Electric emergency hydraulic pump
Manual conveyor removal with brake release

Instrumentation

J1939 CAN gauge (Stage V, Tier 4 Final, gasoline and LP)

LED warning indicators

Alternator
Engine oil pressure
Coolant temperature
Brakes

Engine hour meter

Lighting (LED)

Headlights with high and low beam

Taillights

Brake

Turn signals

Worklight

Electrical

12V

Maintenance free battery

95 amp minimum alternator

Configurations

Standard

Directionally controlled delivery head
Auto self-leveling with alarm for leveling failure

Retractable seat belt

Engine cover

22 gallon (83 liter) fuel tank

Configurations (cont.)

Standard (cont.)

Engine safety shutdown (low oil pressure, high temperature)

Back up alarm

Anti-restart ignition switch

Emergency hand crank conveyor retraction

Right side collapsible hand rail

Zinc rich primer and white or safety yellow polyurethane top coat

Optional

No Touch IATA 913 Compliant Collision Avoidance System

Lithium battery (consult factory for details)

Battery Management System for fast chargers

On board SAE J1772 compliant charger

Directional Transfer Module (DTM) for cart/belt interface

Canopy over conveyor belt

Retractable left side package guide

Third party handrail options

Enclosed operators cab

Seat options

Keyed ignition

LED amber beacon light

LED turn signals

Push button start

Rear view mirror

Master disconnect switch

Tow hooks

Fire extinguisher(s)

Spare tire assemblies

Preventive maintenance service kits

Heavy duty winterization package to -40F

Custom paint color

Consult factory for additional specialized configurations

Note: Dimensions may change slightly with individual engine packages. Specifications subject to change without notice.