

Made to Move!

**WOLLARD**  
INTERNATIONAL

# M400 Push back / Tow Tractor

25,000-48,000 lbs. (11,340-21,772 kg)  
drawbar pull with 4-wheel steer allowing for  
great maneuverability on the ramp on in the  
hanger



## Agile and Powerful push back tractor with tow tractor versatility.

The M400 has a drawbar rating from 25,000 to 48,000 lbs. (11,340 to 21,772 kg). It is available as dual Stage V diesel as well as Tier 3 diesel for export only. It is a four-wheel drive, four-wheel steering diesel powered workhorse.

Substantive power and agility for demanding aviation or industrial applications.

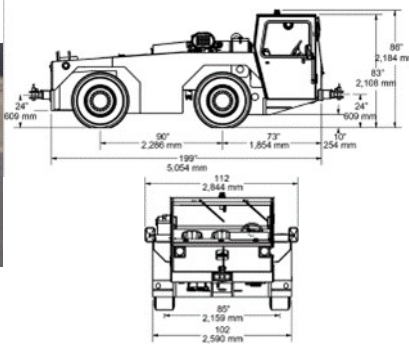
The all-weather cab features heat and defrost as well as optional air conditioning. The Funk Powershift transmission drives six forward and three reverse speeds. Dual planetary reduction drive axles insure maximum power and traction to all four wheels.

Push back capable: 737, 757, 767, A320, A321, A300

Customized configurations for every application are available.



Photos and illustrations may show optional equipment



## Features:

- ⇒ 25,000 - 48,000 lbs. (11,340 - 21,772 kg) drawbar pull rating.
- ⇒ Stage 5 diesel, or Tier 3 diesel (export or National Security Exemption only)
- ⇒ Factory new Powershift transmission
- ⇒ Four-wheel: drive, steering, and internal wet disc brakes
- ⇒ Heavy-duty one piece welded steel frame
- ⇒ LED lighting
- ⇒ Safety
  - Back up alarm
  - Horn
  - Anti-restart ignition switch
  - Engine safety shutdown (low oil pressure, high temperature)

Proven durability. Trusted performance.



Go to [wollardintl.com](http://wollardintl.com) for more.



## M400 Push back / Tow Tractor

	IMPERIAL	METRIC		IMPERIAL	METRIC
<b>Drawbar capacity options</b>			<b>Dimensions &amp; Shipping Weight</b>		
Model 400-25K	25,000 lbs.	11,339 kg	Length	231 in	5,867 mm
Model 400-32K	32,000 lbs.	14,514 kg	Width	102 in	2,591 mm
Model 400-42K	42,000 lbs.	19,050 kg	Height (including beacon)	89 in	2,260 mm
Model 400-48K	48,000 lbs.	21,772 kg	Ground clearance	8 in	203 mm
			Speed (forward)*	16 mph	26 km/h
<b>Gross vehicle weight</b>			Speed (reverse)	5 mph	8 km/h
Model 400-25K	31,250 lbs.	14,174 kg			
Model 400-32K	40,000 lbs.	18,143 kg			
Model 400-42K	53,000 lbs.	24,040 kg			
Model 400-48K	60,000 lbs.	27,215 kg			

\*Consult factory for speeds

### Drive System

#### Engine options

##### Diesel

Cummins QSB6.7L (Tier 3, export or National Security Exemption only)  
Cummins QSB6.7 (Stage V)

#### Cooling system

Full size liquid cooled radiator, isolated from vibrations

#### Transmission

Factory new Funk Powershift automatic transmission with separate transmission fluid cooler

#### Axles

Front: NAF planetary gear steer axle  
Rear: NAF planetary gear steer axle, trunnion mounted to frame to allow tractor to negotiate obstructions

#### Tires

Front: 385/65R22.5  
Rear: 385/65R22.5

### Systems

#### Chassis

Heavy-duty one piece welded steel frame

#### Steering

Four-wheel power assisted  
Operator selected: Two-wheel, coordinated four and crab four-wheel steering

#### Braking

Four-wheel, power assisted internal wet disc  
Parking: Disc

### Systems (cont.)

#### Instrumentation

LED digital display with diagnostics (CAN J1939)

Coolant temperature

Engine speed

Oil pressure

Battery voltage

Fuel level

Engine hours

Engine alarm/ fault lamps

Transmission oil temperature

Speedometer

#### Lighting (LED)

Headlights with high and low beam

Taillights

Brake

Reverse

Work light

#### Electrical

12V System

Maintenance free battery

95A minimum alternator (engine dependent)

### Configurations

#### Standard

Adjustable operator's seat with retractable seat belt

Passenger's seat with retractable seat belt

Back up alarm

Zinc rich primer and white polyurethane top coat or yellow

34 gallon (128.7 Liter) fuel tank

Anti-restart ignition switch

### Configurations (cont.)

#### Standard (cont.)

Engine safety shutdown (low oil pressure, high temperature)

Enclosed operator's cab with heat and defrost

Air conditioning (optional)

Mirror kit(s):

Left and right side mirrors

Hitch Mirrors

#### Optional

Air conditioning

Hitch view and or back up camera with LCD dash monitor

Trailer air brakes (only with Tier V engine)

Fire extinguisher(s)

Keyed ignition system

LED amber beacon light

Spot or work lights

Front and rear hitches

Third seat

Master disconnect switch

Auto-lube system

License plate bracket

Spare tire assemblies

Heavy-duty winterization package to -40°F

Semi-suspension operator's seat

Custom paint color

Consult factory for additional specialized configurations

Note: Dimensions may change slightly with individual engine packages. Specifications subject to change without notice.